

Rev.	Date	Text	Sign
Drawn by R.KARLSEN	Approved by - date	Filename STAVANGER_HAVN.DWG	Date 0
Owner <b>RUTEK</b>	Title STAVANGER HAVN SITUASJONSPLAN VÅGEN	Scale 1:1500	Drawing no.
Rutek AS - Liastølveien 7 - 4027 Stavanger	Customer TALL SHIPS RACES STAVANGER 2011	Size A3	Sheet 1/1

# TELTPLAN

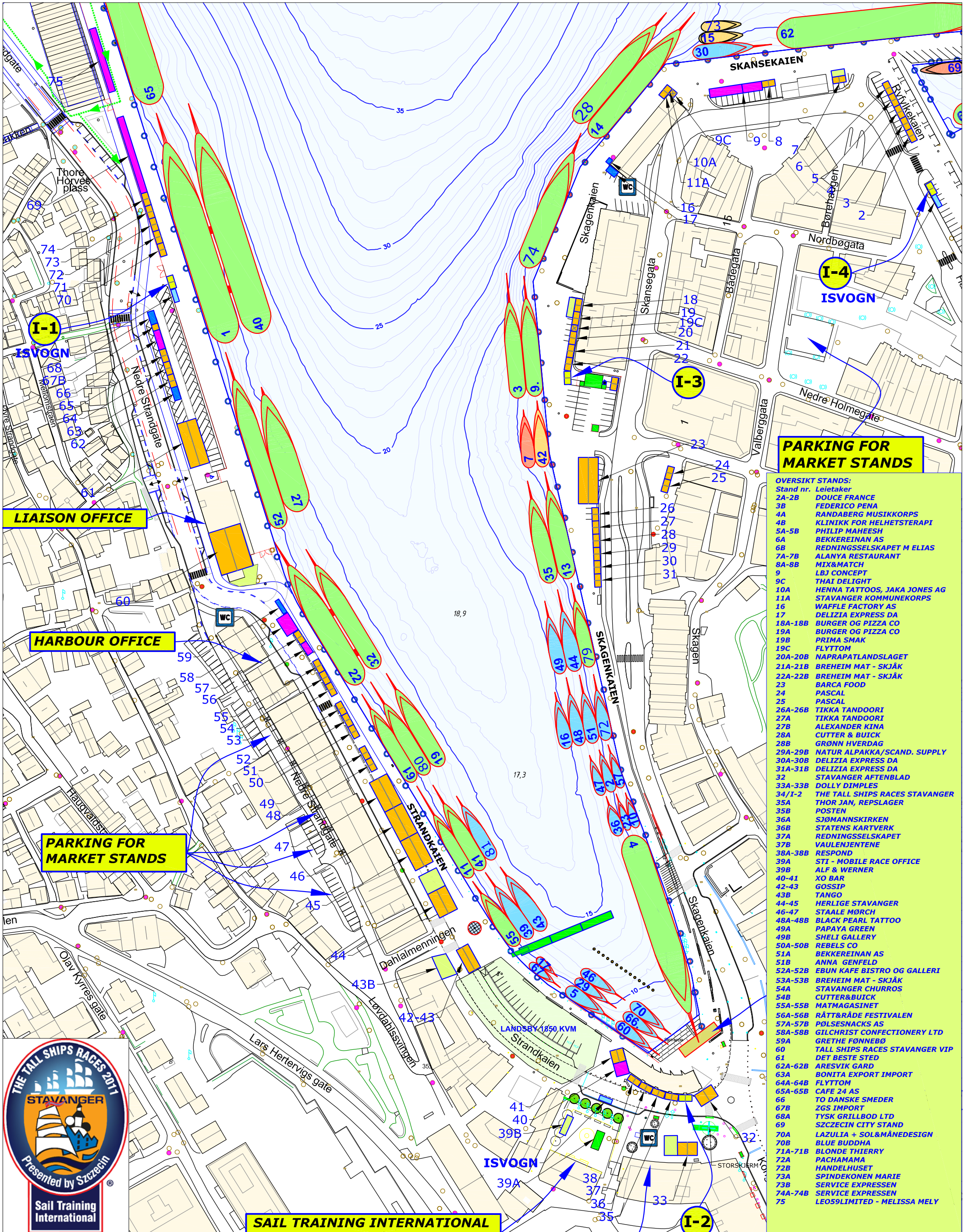
## THE TALL SHIPS RACE

### STAVANGER 28. - 31. 07.2011



REV. 11.07.2011, v3

+  = TELT   
 = UTESERVERING   
 = SALGSVOGN   
 = SCENER



#### PARKING FOR MARKET STANDS

- OVERSIKT STANDS:**
- Stand nr. Leietaker
  - 2A-2B DOUCE FRANCE
  - 3B FEDERICO PENA
  - 4A RANDBERG MUSIKKORPS
  - 4B KLINIKK FOR HELHETERAPI
  - 5A-5B PHILIP MAHEESH
  - 6A BEKKEREINAN AS
  - 6B REDNINGSSKAPET M ELIAS
  - 7A-7B ALANYA RESTAURANT
  - 8A-8B MIX&MATCH
  - 9 LBJ CONCEPT
  - 9C THAI DELIGHT
  - 10A HENNA TATTOOS, JAKA JONES AG
  - 11A STAVANGER KOMMUNEKORPS
  - 16 WAFFLE FACTORY AS
  - 17 DELIZIA EXPRESS DA
  - 18A-18B BURGER OG PIZZA CO
  - 19A BURGER OG PIZZA CO
  - 19B PRIMA SMAK
  - 19C FLYTTOM
  - 20A-20B NAPRAPATLANDSLAGET
  - 21A-21B BREHEIM MAT - SKJÅK
  - 22A-22B BREHEIM MAT - SKJÅK
  - 23 BARCA FOOD
  - 24 PASCAL
  - 25 PASCAL
  - 26A-26B TIKKA TANDOORI
  - 27A TIKKA TANDOORI
  - 27B ALEXANDER KINA
  - 28A CUTTER & BUICK
  - 28B GRØNN HVERDAG
  - 29A-29B NATUR ALPAKKA/SCAND. SUPPLY
  - 30A-30B DELIZIA EXPRESS DA
  - 31A-31B DELIZIA EXPRESS DA
  - 32 STAVANGER AFTENBLAD
  - 33A-33B DOLLY DIMPLES
  - 34/I-2 THE TALL SHIPS RACES STAVANGER
  - 35A THOR JAN, REPSLAGER
  - 35B POSTEN
  - 36A SJØMANSKIRKEN
  - 36B STATENS KARTVERK
  - 37A REDNINGSSKAPET
  - 37B VAULENJENTENE
  - 38A-38B RESPOND
  - 39A STI - MOBILE RACE OFFICE
  - 39B ALF & WERNER
  - 40-41 XO BAR
  - 42-43 GOSSIP
  - 43B TANGO
  - 44-45 HERLIGE STAVANGER
  - 46-47 STAAL MØRCH
  - 48A-48B BLACK PEARL TATTOO
  - 49A PAPAYA GREEN
  - 49B SHELII GALLERY
  - 50A-50B REBELS CO
  - 51A BEKKEREINAN AS
  - 51B ANNA GENFELD
  - 52A-52B EBUN KAFE BISTRO OG GALLERI
  - 53A-53B BREHEIM MAT - SKJÅK
  - 54A STAVANGER CHURROS
  - 54B CUTTER&BUICK
  - 55A-55B MATMAGASINET
  - 56A-56B RÅTT&RÅDE FESTIVALEN
  - 57A-57B PØLSENACKS AS
  - 58A-58B GILCHRIST CONFECTIONERY LTD
  - 59A GRETHE FØNNEBØ
  - 60 TALL SHIPS RACES STAVANGER VIP
  - 61 DET BESTE STED
  - 62A-62B ARESVIK GARD
  - 63A BONITA EXPORT IMPORT
  - 64A-64B FLYTTOM
  - 65A-65B CAFE 24 AS
  - 66 TO DANSKE SMEDER
  - 67B ZGS IMPORT
  - 68A TYSK GRILLBOD LTD
  - 69 SZCZECIN CITY STAND
  - 70A LAZULIA + SOL&MÅNEDESIGN
  - 70B BLUE BUDDHA
  - 71A-71B BLONDE THIERRY
  - 72A PACHAMAMA
  - 72B HANDELHUSET
  - 73A SPINDEKONEN MARIE
  - 73B SERVICE EXPRESSEN
  - 74A-74B SERVICE EXPRESSEN
  - 75 LEOS9LIMITED - MELISSA MELY



**SAIL TRAINING INTERNATIONAL**